

Did a Release Occur? Investigation 101

Joseph Sowers

Environmental Supervisor II

Florida Department of Health in Pinellas County

What might trigger an investigation?

- Discovery of physical damage or degradation
 - Split or cracked penetration boot
 - Split or cracked containment device
 - Severely corroded penetration boot hardware
 - Apparent deformation of containment device

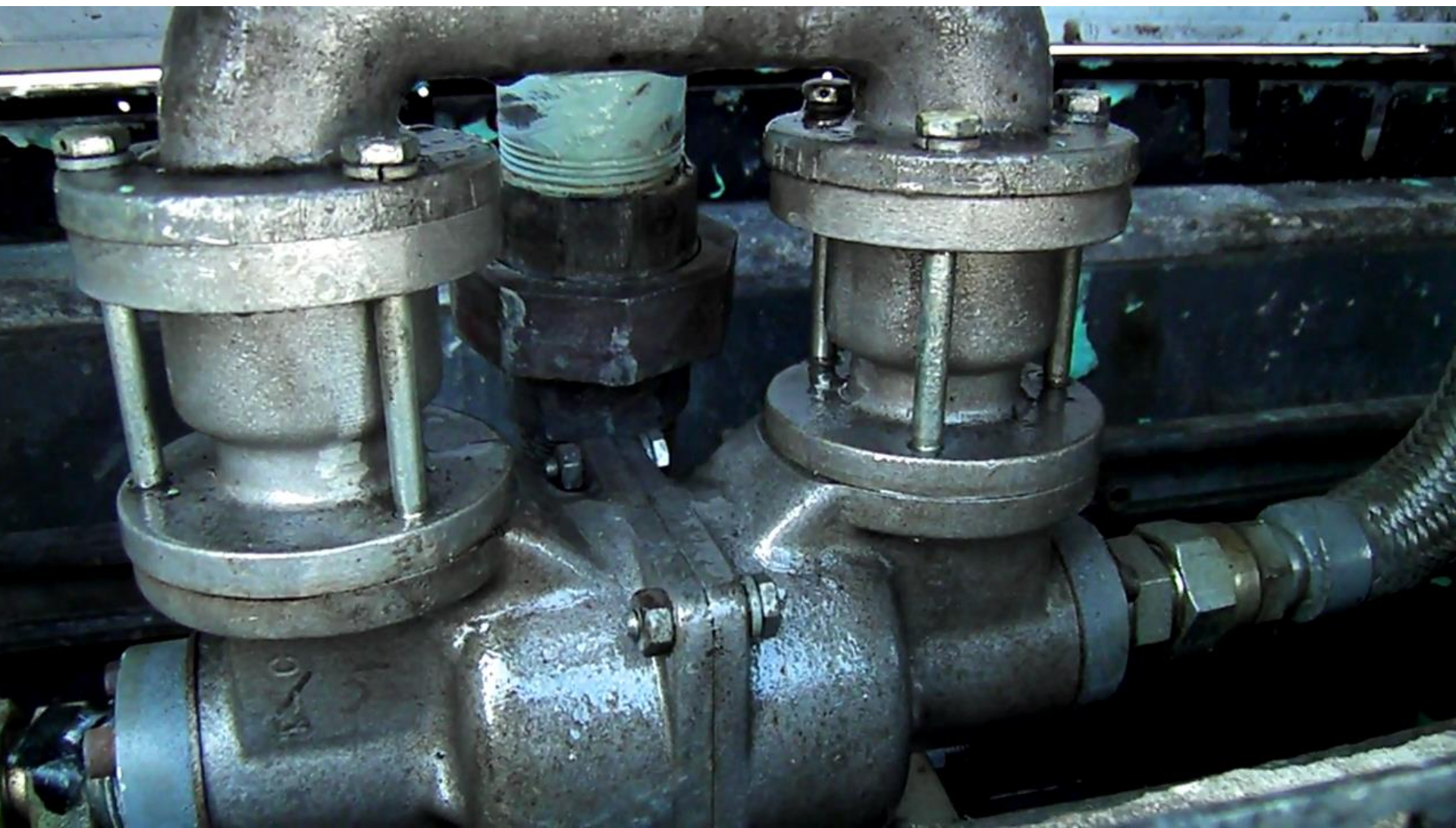


What might trigger an investigation?

- Positive response of a release detection system or device (non-fuel/product)
 - Loss of brine
 - Loss of pressure or vacuum
 - Sensor alarm
 - Visual observation of liquid in interstitial space

What might trigger an investigation?

- Positive response of a release detection system or device (fuel/product)
 - Loss of brine
 - Loss of pressure or vacuum
 - Sensor alarm
 - Visual observation of product in interstitial space or containment device



Now what?

- Find the source/cause of the product and stop.
- Remove product from interstice and/or containment device.
 - Especially for tank interstices this may take several events.
- Complete inspection of the visual portions of the containment.

- Determine type of testing required
 - Tank interstice
 - Manufacturer test protocol
 - NFPA 30: 2-8
 - Piping interstice
 - Manufacturer test protocol
 - » Ability to isolate
 - Spill Containment Unit
 - Double wall
 - Manufacturer test protocol
 - Single wall
 - Manufacturer test protocol
 - Hydrostatic
 - Vacuum or Pressure
 - Containment sump
 - Manufacturer test protocol
 - Hydrostatic
 - Vacuum or Pressure

- Test Results
 - Passing: no environmental testing warranted
 - Failing
 - Determine type, scope, and timing of environmental testing
 - Determine location of testing
- Implement Restoration Process per applicable regulations