

NAHMMA Field Trip Schedule

Half Day of Tours

Monday, August 27, 2018
Departure: 7:45 AM Return: 12:30 PM

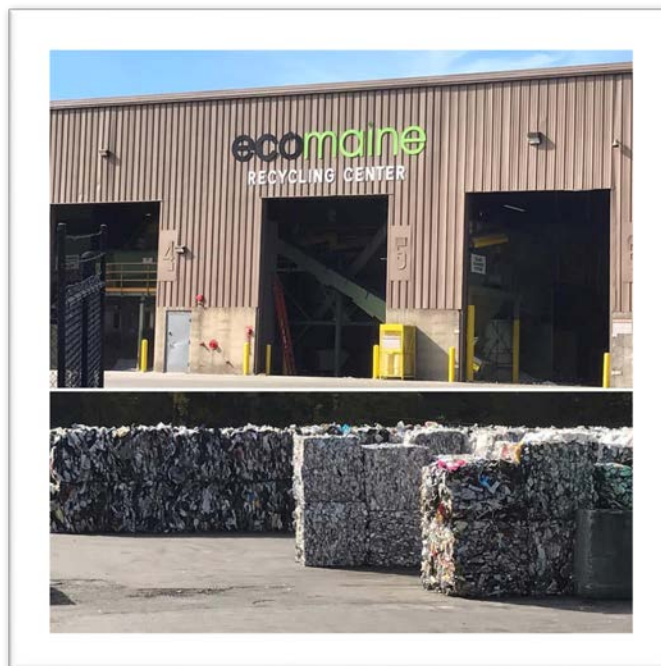
Stop 1:



64 Blueberry Road, Portland, ME

A public, non-profit waste management company owned and operated by 20 municipalities in southern Maine. Tour includes: waste-to-energy plant and recycling facility (largest material recovery facility – MRF - in Maine).

www.ecomaine.org



Stop 2:

Riverside Recycling



910 Riverside Street, Portland, ME

Riverside Recycling is a regional facility for the processing, recycling and/or disposal of construction and demolition debris, electronic waste, inert material, bulky waste and organic material such as leaf and yard waste. We are open to the general public and are ready to serve the disposal needs of businesses, contractors, municipal operations and individual residents. The site is operated by CPRC Management and owned by the City of Portland. Also, collects HHW 1st Saturday of the month (April through November).

We seek to maximize the recycling or reuse of the materials we accept as we work to make the greater Portland area a sustainable community.

<http://riversiderecycles.com/>